

Cornell Cooperative Extension Chemung County

Agriculture Program
425 Pennsylvania Ave.
Elmira, NY 14904
t. 607.734.4453
e. ema228@cornell.edu
chemung.cce.cornell.edu

National Amateur Championship (NAC) English Springer Spaniel Grounds Survey Report

Liz Alexander
Agricultural Development Specialist
Cornell Cooperative Extension of Chemung
County

Janice Degni
Field Crop Specialist
South Central New York Dairy and Field
Crops Team



Cornell Cooperative Extension
South Central NY Dairy and Field Crops Program

Putting Knowledge to Work

Cornell Cooperative Extension is an employer and educator recognized for valuing AA/EEO, Protected Veterans, and Individuals with Disabilities and provides equal program and employment opportunities.



Summary

No potentially hazardous grass awns were found in the fields surveyed on Wednesday, September 29th. Grasses that were specifically looked for were Canadian Wild Rye, Cheat Grass, Foxtail, Spear Grass and Virginia Wild Rye.

Four fields were surveyed in preparation for the National Amateur Championship (NAC) English Springer Spaniel Events at Finger Lakes National Forest and Field Trials in Pennsylvania. Janice and Liz were directed and assisted in scouting by Roger Schenone and Ted Lagala.

The grasses shown and listed in Fig. 1 are those found at the four fields scouted. Based on our knowledge and observations, we did not identify any other grasses during our scouting tracks. However, it should be noted that while we did not observe any other grass species than those listed, this report does not guarantee that there are no other grass species present. Other plants were present in the fields observed. Some samples of the plants are shown in Fig. 2.

Figure 1. Grass Specimens Identified in Field Scouting



Note. Grasses identified from left to right: Smooth brome grass, Reed Canary grass, Orchard grass, Timothy, Fescue

Figure 2. Plant Specimens Identified in Field Scouting



Note. Plants from left to right: Hemp dogbane, Queen Anne's Lace, catnip, fleabane, Bird's-foot Trefoil. In addition to these Specimens, other various wild flowers were present. (not illustrated).

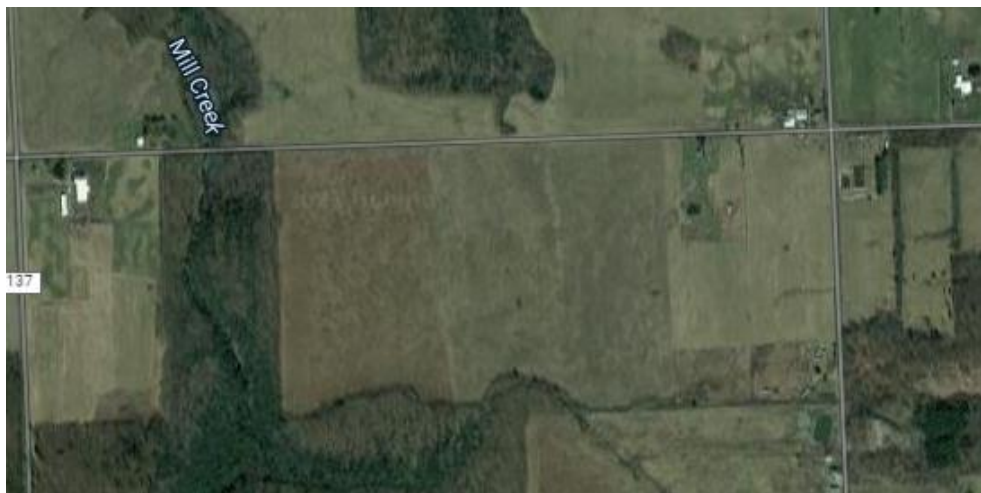
Field 1

The first field scouted was near Finger Lakes National Forest on Dean Rd. between Mill Creek and Keady Rd. This field was predominantly composed of goldenrod and aster, which typically was out-competing the grasses present. Of the grasses in this field, orchard grass and canary grass were the most common representing only 10 to 15 percent of the field content. It is worth noting that the ground was uneven, with several patches of thorny brambles and clumps of bird's foot trefoil which could cause a tripping hazard. The photographs below illustrate the grasses and plants present in the field.

Figure 3. Photographs of Field 1



Figure 4. Aerial Map of Field 1



Field 2

The second field scouted was located on Lodi Center Rd. between Smith Rd. and Neal Rd. This field was very similar to Field 1. The dominant plants were goldenrod and aster, with an undergrowth of trefoil. The ground in this field was also uneven with patches of brambles. Orchard grass and canary grass were the most common grasses present. Other plants present include chicory, Queen Anne's Lace, and milkweed, as seen in Fig. 5.

Figure 5. Photograph of Milkweed Plant in Field 2



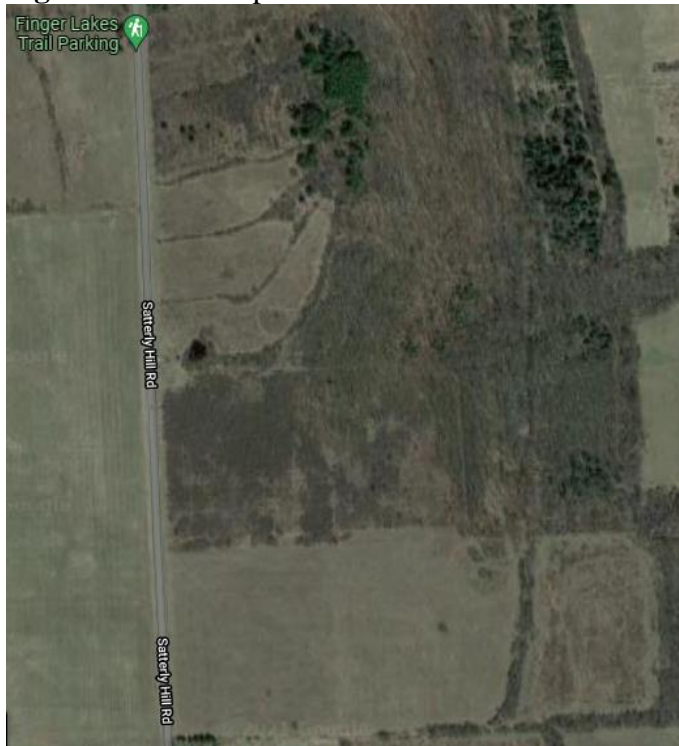
Figure 6. Arial Map of Field 2



Field 3

The third field was a hillside along Satterly Hill Rd, outside of Burdett, NY. This field contained more grasses than the previous field, yet the grass species were still predominately orchard grass and canary grass. This field had less underbrush, but it should be noted that the ground was uneven, presumed to be from moldboard plowing in the past that was not smoothed before the field was reseeded or left to grow up with wild plants. The field had a greater slope than the other fields.

Figure 6. Arial Map of Field 3



Field 4

The fourth field scouted was in Gillet, Pennsylvania along Thunder Rd. This field was well managed and predominately smooth brome grass and canary grass with a much great content than the other fields with approximately 70 to 80 percent. The field was wet due to recent rain, but otherwise had less tripping hazards. The growth was much less dense that the other fields. The ground was more even also.

Figure 7. Arial Map of Field 4



Field 5

Addendum for field 5 located in Alpine, NY at 2275 Rhodes, Road.
New Training grounds

This field was surveyed on 11/5/2021 with Tim Edwards as it was determined that the original training grounds were not usable as the cover was too heavy.

This field was a hay field of mixed grasses with substantial growth. The predominant species are not species that have an awned seedhead. The three main species were Smooth Brome grass (*Bromus inermis*), Orchard grass (*Dactylis glomerata*), and reed canarygrass (*Phalaris arundinacea*). Other plants included golden rod, aster, and miscellaneous broadleaves.

Figure 8. Arial Map of Field 5

