

Survey of grasslands to be used for the 60th Anniversary of the English Springer Spaniel Field Trial Association National Amateur Championship, near the towns of Silver Creek and Fullerton in Merrick and Nance Counties, Nebraska.



Report by Matt Sousek, M.S.

October 2023

Surveys were conducted at two separate locations on areas that will be used for the 60th ESSFTA National Amateur Championship. Surveys were conducted on September 25th at Location 1 (The Army National Guard Site) and on October 5th at Location 2 (The Kingdom Area). Both locations were extensively surveyed to locate occurrences of plants to ensure that harmful plants to dogs were identified if present. The purpose of this survey is to ensure the safety of all participants by identifying any potential plants of concern that have the potential to cause harm to dogs. A common resource used that identifies these plants of concern is located at the following website <https://www.meanseeds.com/resources/the-bad-grass-list/>.

The survey was conducted on foot over areas that will be used for the competition. A random walking path within the areas was used with a distance of roughly 40 yards between passes as illustrated in the tracks from my location on the maps below (Figures 1-6). Additional to my tracks in blue Collin Pickrel tracks in green adjacent to my tracks adding up to a total of 21 miles of surveying recorded between Collin and myself. The locations surveyed were identified by Collin as areas to be used on the days of the competition so that we could focus our survey on the areas of interest to do a thorough assessment.

All vascular plant species identified in the two locations were recorded and a list was created using the Universal FQA calculator with the Nebraska Database (Rolfmeier, S. and G. Steinauer. 2003. Vascular Plants of Nebraska (Version I - July 2003). Nebraska Natural Heritage Program, Nebraska Game and Parks Commission. Lincoln, Nebraska. 57 pp. Updated 2013) to give floristic metrics and is provided in tables 1 and 2. A total of 75 species were observed in the 2 locations along the tracks traveled (Fig 1-6). The maps shown give the paths traveled along with the locations of plants that have the potential to be harmful to dogs and the GPS coordinates of those potentially harmful plants in table 3.

The Army National Guard site contained very few plants of concern shown in figure 6. At the entrance to the west is an area of concern due to Field Sandbur (*Cenchrus longispinus*) around the concrete pad and another location in the center of the field near the dirt pile. In the northeast area of the field a small patch of Prairie Three-Awn (*Aristida oligantha*) was located in a low spot of the field. It was removed. The Kingdom Area had one area with Canada Wild-Rye (*Elymus canadensis*) located on the north half of the south field (Figure 2.) A decision was made to exclude this area for use in the competition, mark with flags and future procedures to remove will be implemented. Another area of concern was a parking lot which contained Downy Brome (*Bromus tectorum*) (Figure 3). An alternate area was surveyed, and a decision was made to relocate the area for parking. The area will be marked and future procedures to remove will be implemented. The last area of concern was an entrance to the north side of the east field that contained Field Sandbur (*Cenchrus longispinus*). It was discussed that this area will be shredded and or tilled to eliminate the concern of Field Sandbur (*Cenchrus longispinus*). It has been removed using hand pick, dragged and tilled protocol.

All plants that were observed in the fields are listed in this report and some may be of concern to dog enthusiasts. The plants of known concern have been pinpointed on the maps and highlighted in the table of plants. This report is for informational purposes to inform the reader so that each individual can make his or her own decision regarding their participation in events held at the locations that have been surveyed. It is important that all dog owners, handlers, and participants take some time to look over this list of plants to ensure they are educated to what is in the field so that they can make an informed decision for the safety of their animals. This report is for informational purposes and neither its author nor the committee that commissioned it can guarantee the safety of any individual dog from harmful plants. Even with an extensive survey of the ground it is impossible to certify any field as 100% clear of harmful plants.

Note: It is impossible to guarantee that any of the harmful plants are not present in each field and the providers of this survey are not liable for any issues that may occur in these fields during the competition. However, we are confident that each field was adequately surveyed.

Table 1. Floristic Quality Analysis

10/12/2023

Practitioner: Matt Sousek

Conservatism-Based Metrics:

Total Mean C:	2.6
Native Mean C:	3.2
Total FQI:	22.5
Native FQI:	24.8
Adjusted FQI:	28.6
% C value 0:	32
% C value 1-3:	28
% C value 4-6:	37.3
% C value 7-10:	2.7
Native Tree Mean C:	2
Native Shrub Mean C:	4.3
Native Herbaceous Mean C:	3.2

Species Richness:

Total Species:	75	
Native Species:	60	80%
Non-native Species:	15	20%

Species Wetness:

Mean Wetness:	1.1
Native Mean Wetness:	1

Physiognomy Metrics:

Tree:	2	2.70%
Shrub:	4	5.30%
Vine:	1	1.30%
Forb:	42	56%
Grass:	24	32%

Duration Metrics:

Annual:	24	32.90%
Perennial:	47	64.40%
Biennial:	2	2.70%
Native Annual:	14	19.20%
Native Perennial:	44	60.30%
Native Biennial:	1	1.40%

Table 2. Species List

<u>Scientific Name</u>	<u>Native?</u>	<u>C value</u>	<u>Physiognomy</u>	<u>Duration</u>	<u>Common Name</u>
Ambrosia artemisiifolia	native	0	forb	annual	common ragweed
Ambrosia psilostachya	native	1	forb	perennial	western ragweed
Amorpha canescens	native	6	shrub	perennial	leadplant
Andropogon gerardii	native	5	grass	perennial	big bluestem
Apocynum cannabinum	native	2	forb	perennial	hemp dogbane
Aristida oligantha	native	4	grass	annual	prairie three-awn
Artemisia carruthii	native	5	forb	perennial	carruths sagewort
Astragalus racemosus	native	6	forb	perennial	alkali milk-vetch
Bassia scoparia (kochia scoparia)	non-native	0	forb	annual	kochia
Bouteloua curtipendula	native	5	grass	perennial	sideoats grama
Bouteloua gracilis	native	4	grass	perennial	blue grama
Brickellia eupatorioides	native	4	forb	perennial	false-boneset
Bromus tectorum	non-native	0	grass	annual	downy brome
Calamovilfa longifolia	native	5	forb	perennial	prairie sandreed
Cannabis sativa	non-native	0	forb	annual	hemp
Cenchrus longispinus	native	0	grass	annual	field sandbur
Chamaecrista fasciculata	native	1	forb	annual	showy partridge-pea
Cirsium altissimum	native	1	forb	perennial	tall thistle
Conyza canadensis	native	0	forb	annual	horseweed
Coreopsis tinctoria	native	1	forb	annual	plains coreopsis
Cyperus lupulinus	native	1	forb	perennial	great plains flatsedge
Dalea villosa	native	5	forb	perennial	silky prairie-clover
Diaperia prolifera	native	3	forb	annual	rabbit-tobacco
Dichanthelium oligosanthes	native	4	grass	perennial	scribners spring-panicum
Digitaria sanguinalis	non-native	0	grass	annual	hairy crabgrass
Drymocallis arguta	native	6	forb	perennial	tall cinquefoil
Echinochloa crus-galli	non-native	0	grass	annual	barnyard grass
Elymus canadensis	native	5	grass	perennial	canada wild-rye
Elymus hystrix	native	6	grass	perennial	bottlebrush grass
Eragrostis cilianensis	non-native	0	grass	annual	stinkgrass
Eragrostis spectabilis	native	3	grass	perennial	purple lovegrass
Eragrostis trichodes	native	5	grass	perennial	sand lovegrass
Euphorbia maculata	native	0	forb	annual	spotted spurge
Euphorbia marginata	native	0	forb	annual	snow-on-the-mountain
Euphorbia virgata	non-native	0	forb	perennial	leafy spurge
Froelichia gracilis	native	3	forb	annual	slender snake-cotton
Gutierrezia sarothrae	native	4	shrub	perennial	broom snakeweed
Helianthus annuus	native	0	forb	annual	common sunflower
Helianthus maximiliani	native	4	forb	perennial	maximilians sunflower
Heterotheca latifolia	native	2	forb	annual	camphor-weed
Juniperus virginiana	native	1	tree	perennial	eastern red-cedar
Kali collina (salsola collina)	non-native	0	forb	annual	slender russian-thistle
Leonurus cardiaca	non-native	0	forb	perennial	common motherwort
Lespedeza capitata	native	5	forb	perennial	round-head bush-clover

<i>Liatris punctata</i> var. <i>punctata</i>	native	5	forb	perennial	dotted gayfeather
<i>Lithospermum incisum</i>	native	5	forb	perennial	fringed puccoon
<i>Mollugo verticillata</i>	non-native	0	forb	annual	green carpet-weed
<i>Oenothera rhombipetala</i>	native	2	forb	biennial	fourpoint evening-primrose
<i>Opuntia polyacantha</i>	native	5	forb	perennial	plains prickly-pear
<i>Oxalis corniculata</i>	non-native	0	forb	annual	creeping wood-sorrel
<i>Panicum virgatum</i>	native	4	grass	perennial	switchgrass
<i>Persicaria pensylvanica</i>	native	0	forb	annual	pennsylvania smartweed
<i>Phalaris arundinacea</i>	native	0	grass	perennial	reed canary grass
<i>Phragmites australis</i>	native	3	grass	perennial	common reed
<i>Phytolacca americana</i>	native	0	forb	perennial	american pokeweed
<i>Populus deltoides</i>	native	3	tree	perennial	plains cottonwood
<i>Prunus americana</i>	native	3	shrub	perennial	wild plum
<i>Rosa arkansana</i>	native	4	shrub	perennial	dwarf prairie rose
<i>Schizachyrium scoparium</i>	native	4	grass	perennial	little bluestem
<i>Scleria triglomerata</i>	native	8	forb	perennial	whip nut-rush
<i>Setaria viridis</i> var. <i>major</i>	non-native	0	grass	annual	green foxtail
<i>Solidago missouriensis</i>	native	5	forb	perennial	missouri goldenrod
<i>Sonchus asper</i>	non-native	0	forb	annual	prickly sow-thistle
<i>Sorghastrum nutans</i>	native	5	grass	perennial	indian grass
<i>Sorghum halepense</i>	non-native	0	grass	perennial	johnson grass
<i>Spartina pectinata</i>	native	5	grass	perennial	prairie cordgrass
<i>Sporobolus compositus</i>	native	3	grass	perennial	tall dropseed
<i>Sporobolus cryptandrus</i>	native	2	grass	perennial	sand dropseed
<i>Sporobolus heterolepis</i>	native	7	grass	perennial	prairie dropseed
<i>Strophostyles leiosperma</i>	native	4	vine	annual	slick-seed wild bean
<i>Symphyotrichum ericoides</i>	native	3	forb	perennial	heath aster
<i>Verbascum thapsus</i>	non-native	0	forb	biennial	common mullein
<i>Verbena hastata</i>	native	4	forb	perennial	blue vervain
<i>Verbena stricta</i>	native	2	forb	perennial	hoary vervain
<i>Vernonia baldwinii</i>	native	3	forb	perennial	western ironweed

Table 3. GPS Locations for Plants of Concern

Common Name	Species	Date	Point_X	Point_Y
Prairie Three-Awn	<i>Aristida oligantha</i>	10/5/23	-97.716802	41.350431
Field Sandbur	<i>Cenchrus longispinus</i>	9/25/23	-97.721554	41.345879
Field Sandbur	<i>Cenchrus longispinus</i>	9/25/23	-97.721474	41.351067
Field Sandbur	<i>Cenchrus longispinus</i>	10/5/23	-97.953722	41.290537
Canada Wild-Rye	<i>Elymus canadensis</i>	10/5/23	-97.956358	41.283603
Canada Wild-Rye	<i>Elymus canadensis</i>	10/5/23	-97.956251	41.283559
Canada Wild-Rye	<i>Elymus canadensis</i>	10/5/23	-97.956043	41.283406
Canada Wild-Rye	<i>Elymus canadensis</i>	10/5/23	-97.955522	41.283162
Downy Brome	<i>Bromus tectorum</i>	10/5/23	-97.950279	41.290650

Figure 1. The Kingdom Area Overview

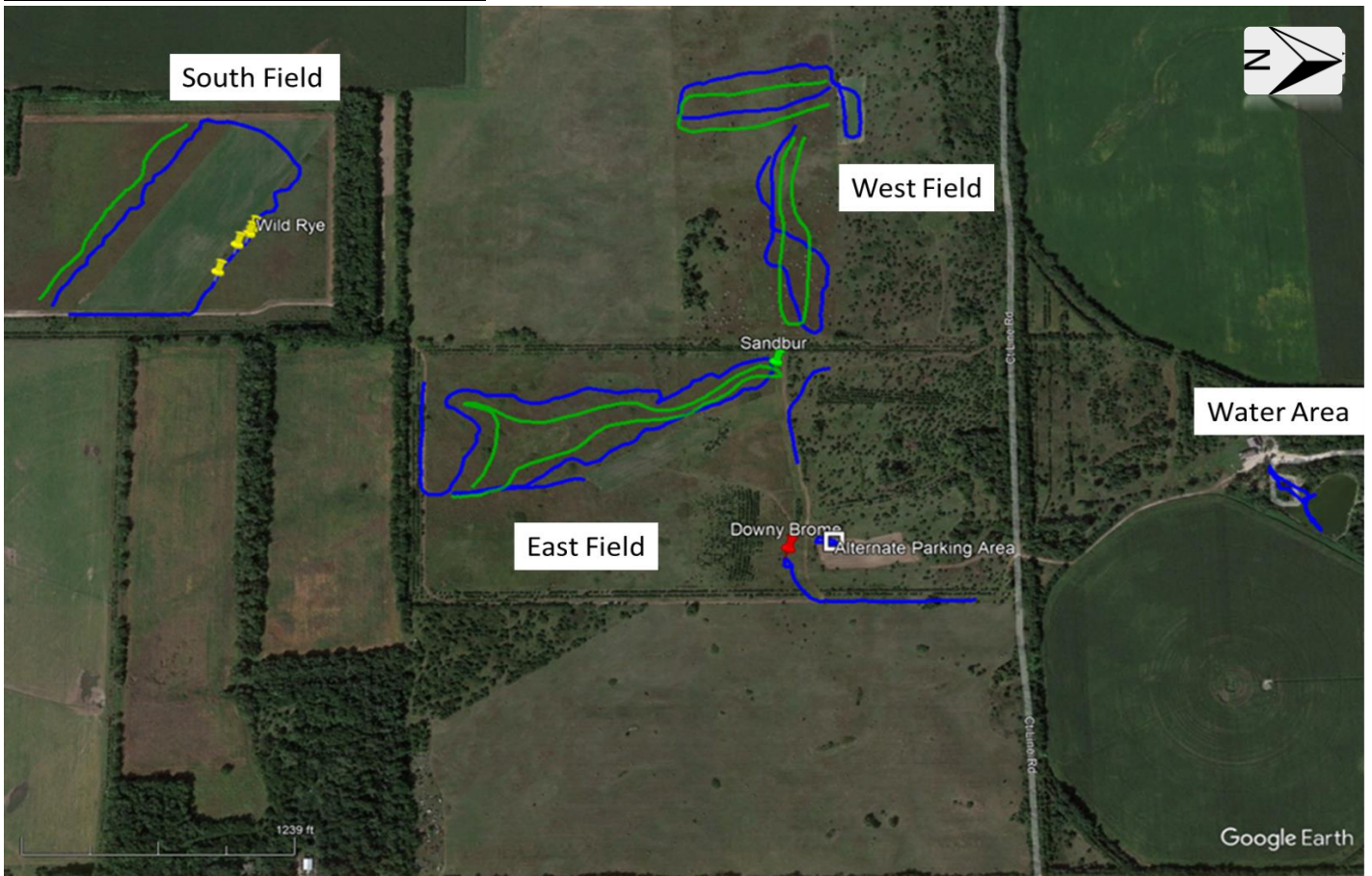


Figure 2. The Kingdom Area South Field

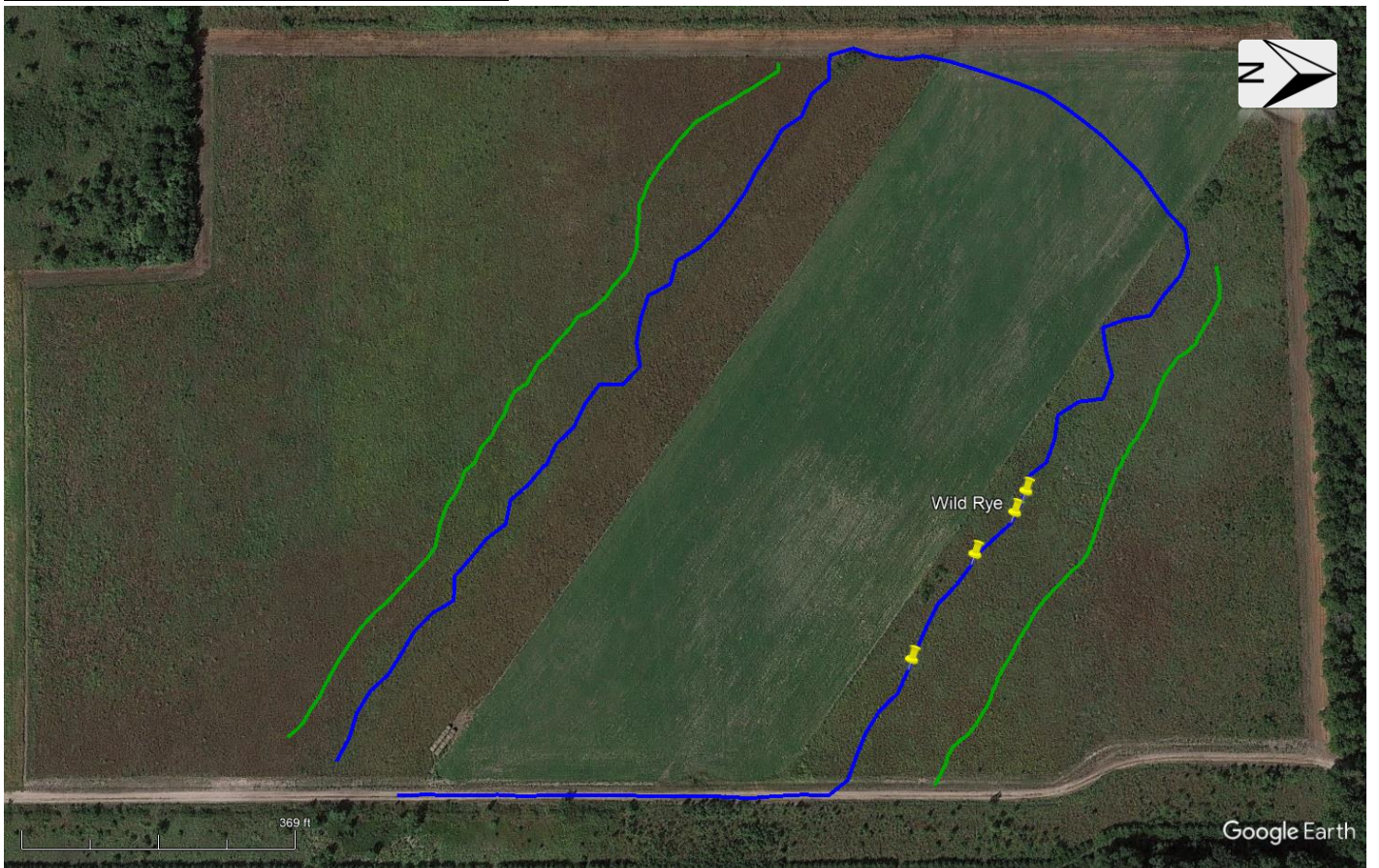


Figure 3. The Kingdom Area East Field

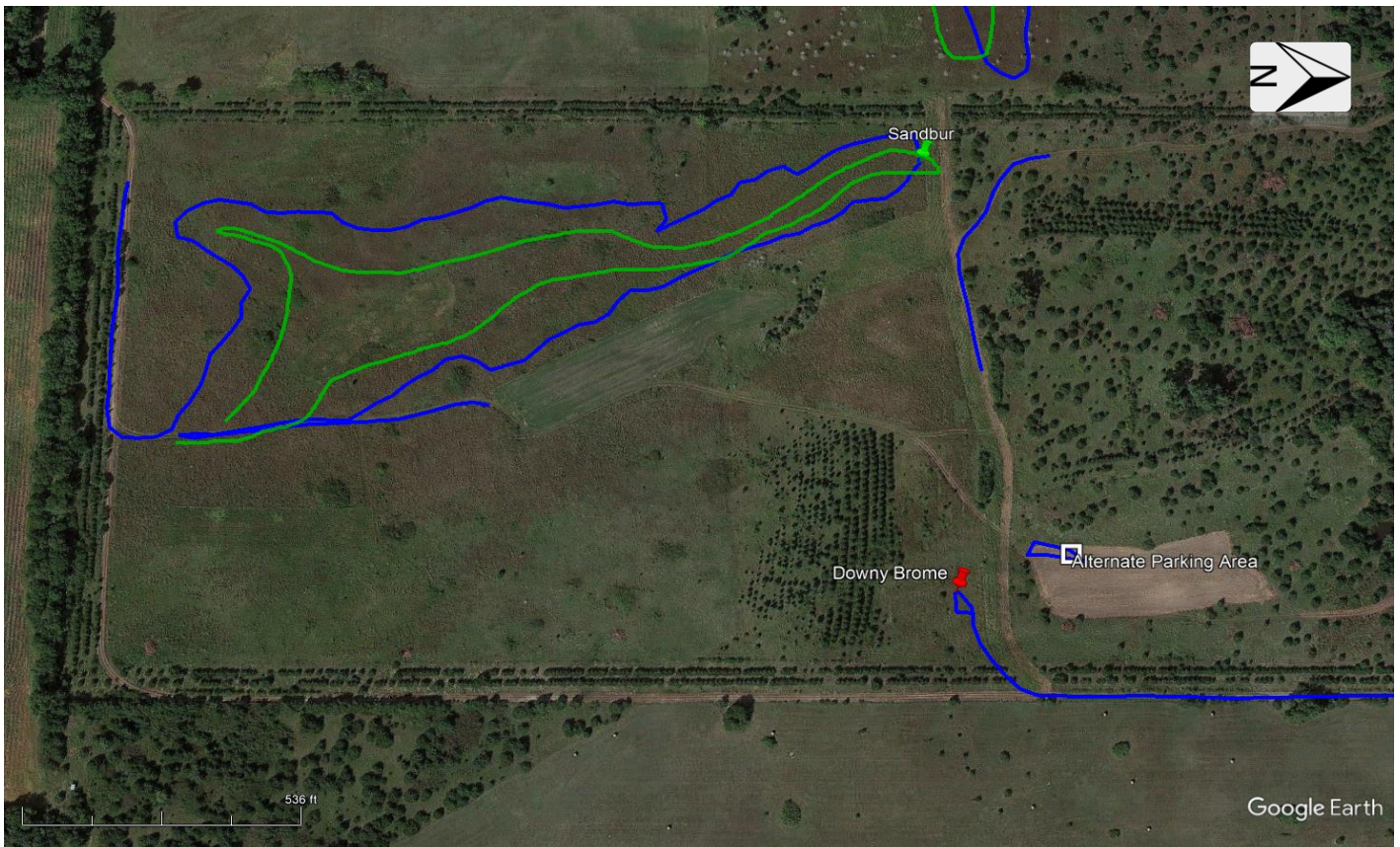


Figure 4. The Kingdom Area West Field

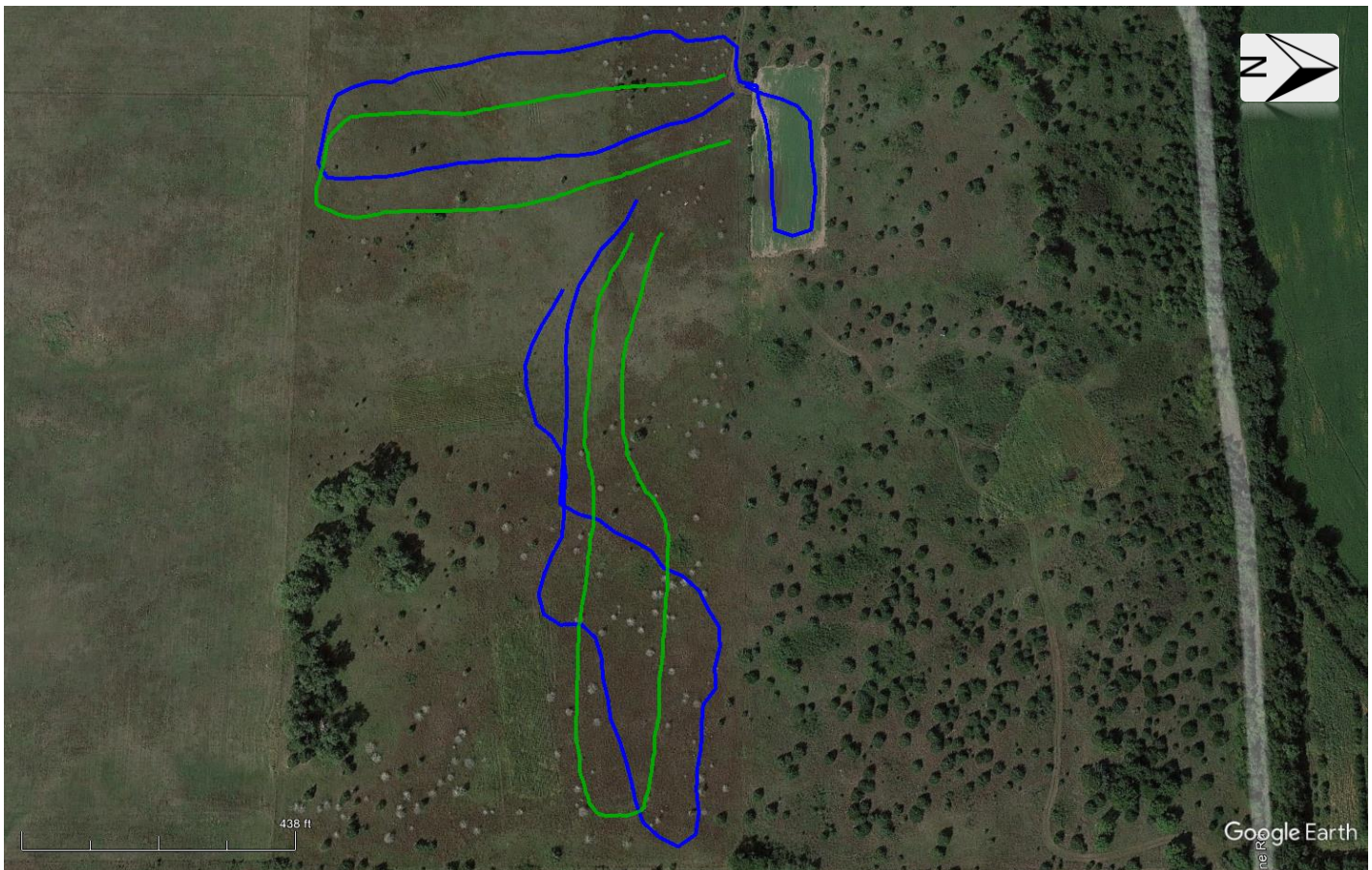


Figure 5. The Kingdom Area Water Area



Figure 6. Army National Guard Site

